



SEO Elite Version 4 Video & E-Book Training Series

Volume Nine The Main Interface Part 2

Design & Content by Robert Lang,
Training Advisor, Bryxen Software Inc.

Need Software Support?
<http://www.bryxensoftware.com/support/>

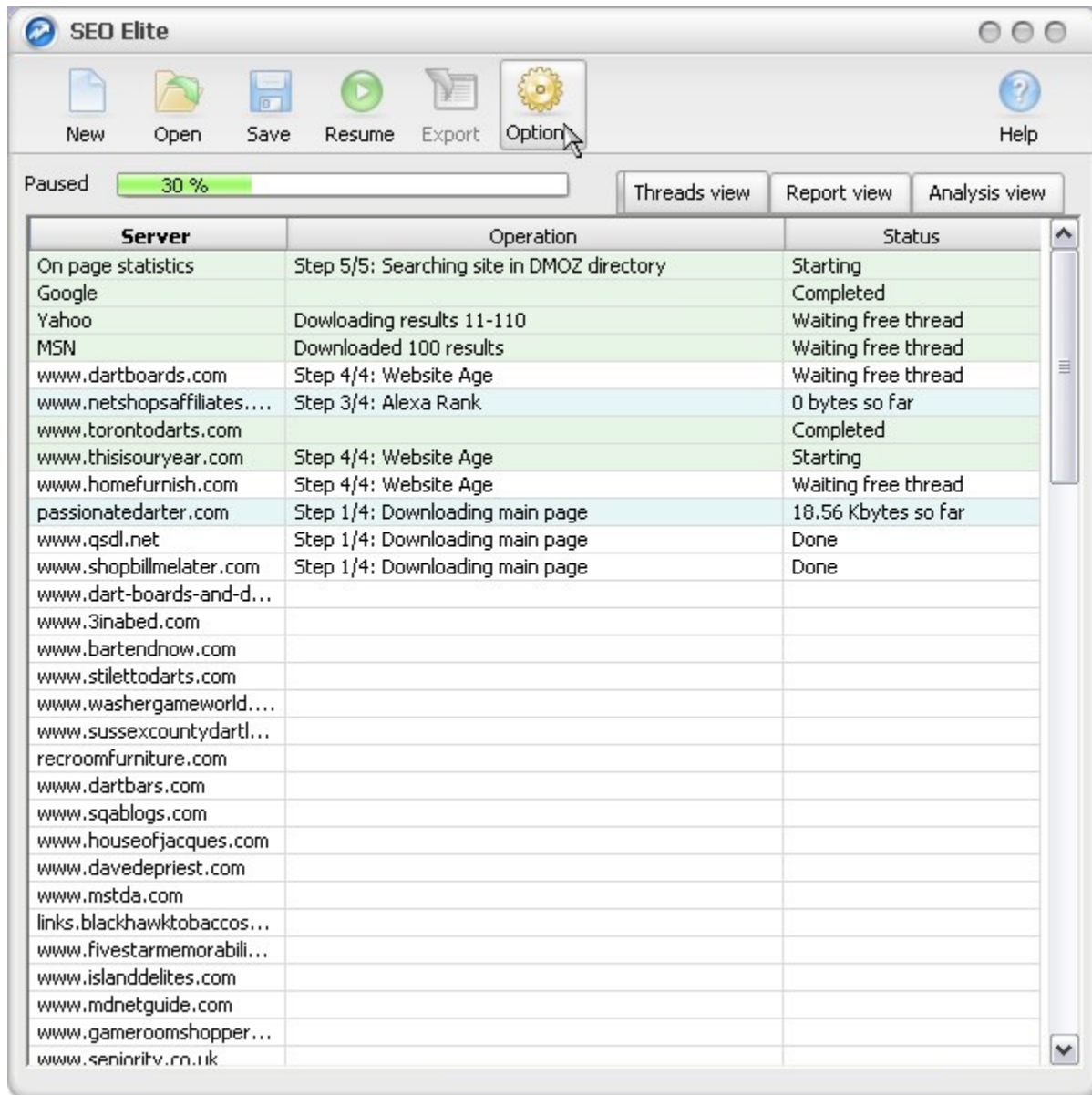
Bryxen Software, Inc.

No portion of Training Manual may be reproduced without written
consent from Bryxen Software, Inc. © 2007 All
Rights Reserved

SEO Elite Version 4 Video & E-Book Training Series

Volume Nine The Main Interface Part 2

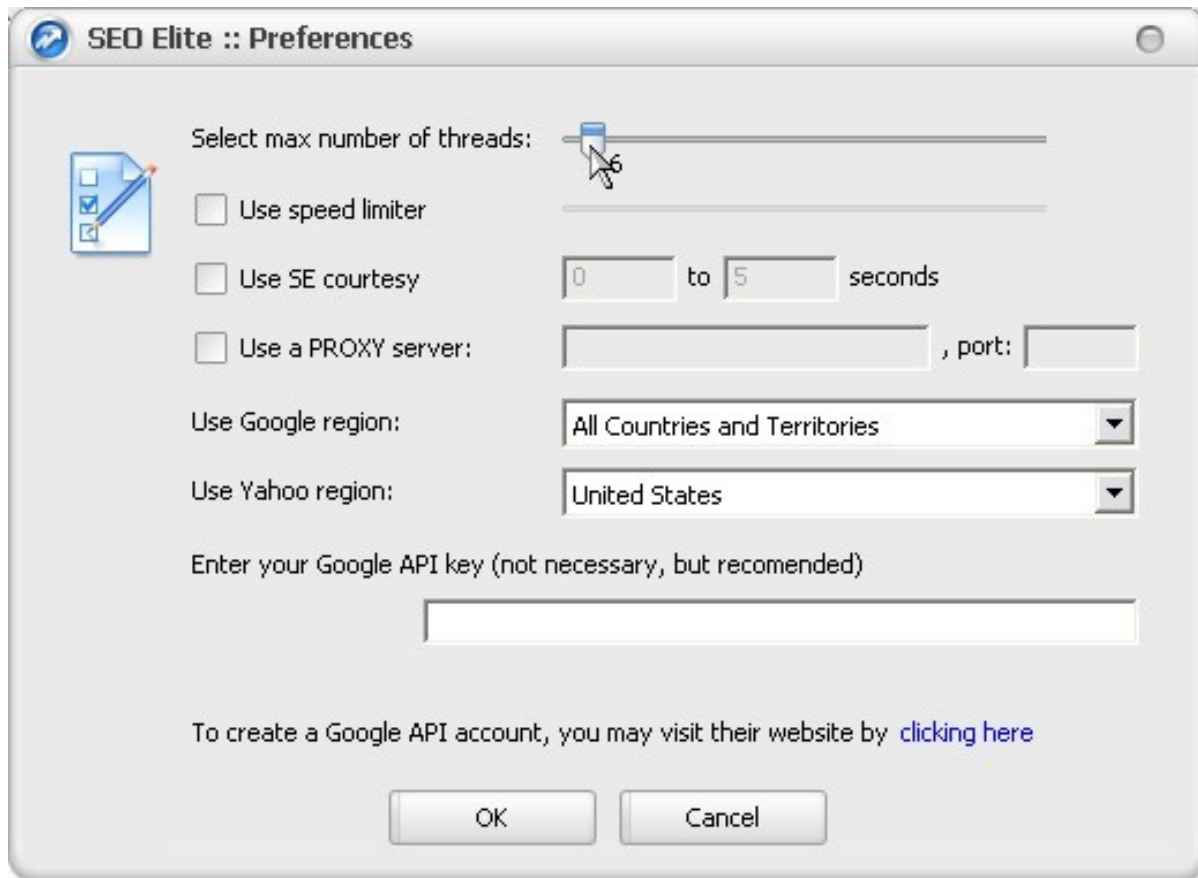
Welcome to the SEO Elite Version 4 Video Training Series Volume Nine The Main Interfaces titled, "Analyze backlinks using a specified search engine." Part 2. Let's continue.



We will now change back to the "Threads view" of the SEO Elite Version 4 Main Interface and continue with the sixth icon titled, "Options."

SEO Elite Version 4 Video & E-Book Training Series

Volume Nine The Main Interface Part 2



Clicking on this icon will bring up another secondary interface titled, “SEO Elite :: Preferences.” This is where you will customize SEO Elite Version 4 with your own specific preferences, as it pertains to your own individual requirements.

The first option is titled, “Select max number of threads:” along with a slider bar. You can increase the number of threads by moving the slider bar to the right up to 50 threads. Each thread is a connection whereby SEO Elite Version 4 acquires system resources within your computer in order to fulfill your project requests. Moving the slider bar to the right increases the performance of SEO Elite Version 4 as well as, increasing the use of your system’s resources.

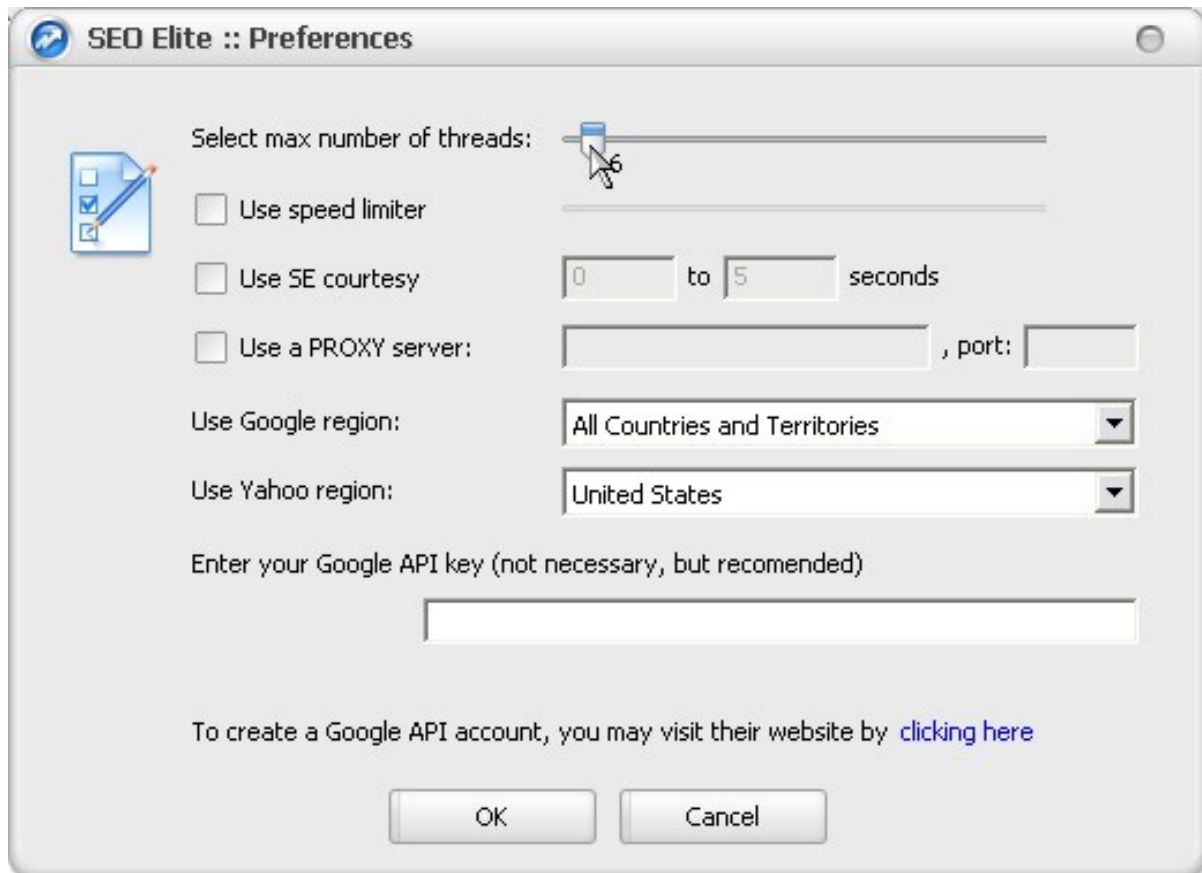
The second option is a check box titled, “Use speed limiter” along with another slider bar. Checking this box allows you to move the slider bar to the right. And by doing so, will increase the bandwidth used to acquire the data from other servers on the Internet to complete your projects. Moving the slider bar to the left will decrease the bandwidth allowance you give SEO Elite Version 4 to use for your projects.

The third option is a check box titled, “Use SE courtesy” along with two number boxes. Checking this box allows you create a time delay separating each data request SEO Elite Version 4 makes to each search engine. You can enter a number in each one of the two

SEO Elite Version 4 Video & E-Book Training Series

Volume Nine The Main Interface Part 2

number boxes. This will create a time delay measured in seconds between requests. You can enter any numbers between zero to one billion.



The fourth option is a check box titled, “Use a PROXY server:” along with one text box and one number box. Checking this box permits SEO Elite Version 4 to go through a proxy server for all of it’s data requests. The text box is where you enter the name of the proxy server. The number box which follows, is where you enter the port number of the proxy server.

The fifth option is titled, “Use Google region.” Here you will see a drop down box listing every region in the world Google has defined. Selecting any one region will tell SEO Elite Version 4 to request only data from this specific region. This option works only when you have selected Google as the search engine you want to use in the SEO Elite Version 4 Application Interface.

The sixth option is titled, “Use Yahoo region.” Here you will see a drop down box listing every region in the world Yahoo has defined. Selecting any one region will tell SEO Elite Version 4 to request only data from this specific region. This option works only when you have selected Yahoo as the search engine you want to use in the SEO Elite Version 4 Application Interface.

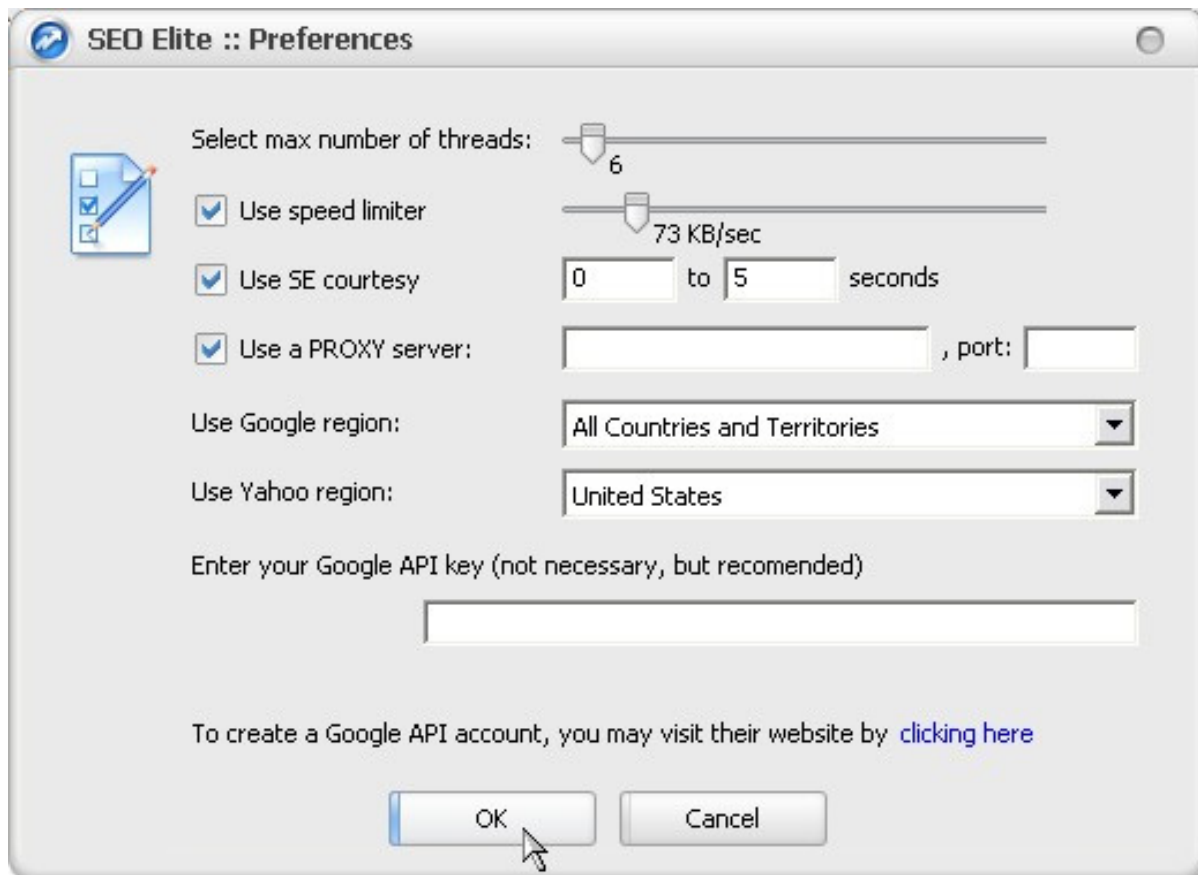
The seventh option is titled, “Enter your Google API key (not necessary, but recommended)”

SEO Elite Version 4 Video & E-Book Training Series

Volume Nine The Main Interface Part 2

followed by a text box. Underneath this text box you will see the statement, “To create a Google API account, you may visit their website by clicking here.”

Entering your own Google API key will allow SEO Elite Version 4 to transmit this key when making requests from the Google Pay per Click Advertising Network.



Clicking the “OK” button at the bottom of the SEO Elite Preferences Interface will load your customized options. Clicking the “Cancel” button will keep the current options, whether they are customized or set by default when you first used SEO Elite Version 4.

This concludes Volume Nine The Main Interface titled, “Analyze backlinks using a specified search engine.” Part 2.